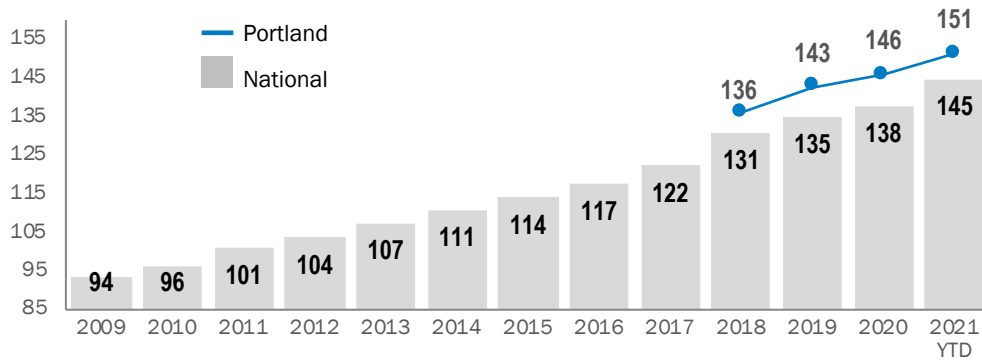
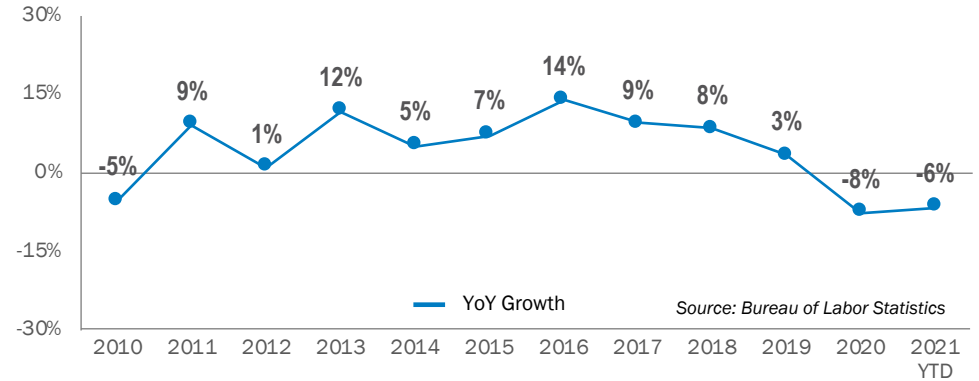


CONSTRUCTION COST INDEX (January 2009 = 100)



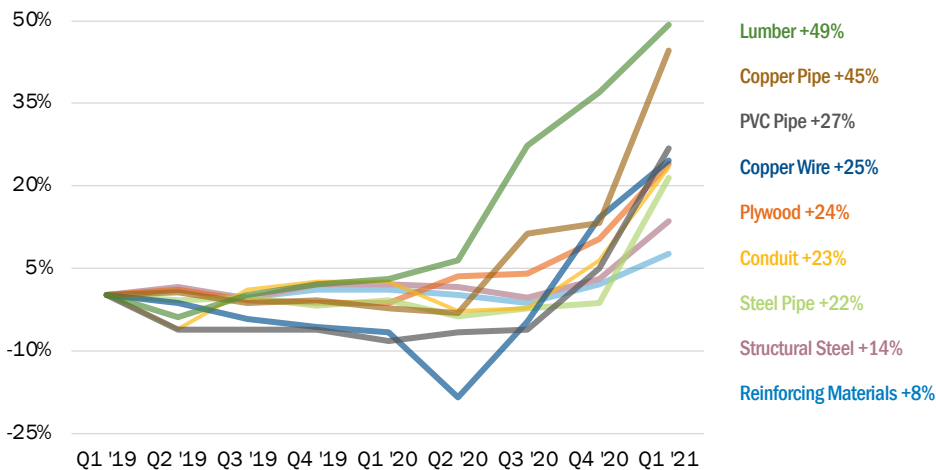
The *Mortenson Cost Index* is showing a single quarter increase of nearly 5% nationally and 3.8% in Portland. Over the last twelve months, costs increased 6.7% nationally and 5.3% in Portland.

PORTLAND CONSTRUCTION EMPLOYMENT GROWTH (an indicator of future wage and activity trends)



Commercial construction employment in the Portland metropolitan area contracted sharply last year in response to the pandemic and has not yet recovered in the early months of 2021. The latest figures released by the Bureau of Labor Statistics show a 6% decline in year-over-year commercial construction employment growth.

MATERIAL PRICING CHANGES (Cumulative 2019 to Q1 2021)



Raw material shortages and manufacturing issues have contributed to sharp increases in building materials over the past year.

ADVICE FOR BUILDING OWNERS

The data collected for the *Mortenson Cost Index* is showing an increase of nearly 5% nationally and 3.8% in Portland for the first quarter of 2021. This is the largest single quarter increase since its inception, driven by significant disruptions to the supply chain and increases in commodity costs. This will potentially moderate throughout the year as capacity returns to pre-pandemic levels. The current upward pressure is somewhat offset by a competitive market with subcontractors working to fill their capacity.

As markets rebound with increased private and government spending, the industry may see additional upward pressure on pricing. We continue to monitor this somewhat unpredictable market and know that a resilient, agile approach to projects will be necessary in the months to come.

For a more specific update or questions regarding this report, please contact:



Gabriel Fox LEED AP
Chief Estimator
971.202.4147
gabriel.fox@mortenson.com



Dan Mehls
Vice President / General Manager
971.202.4113
dan.mehls@mortenson.com